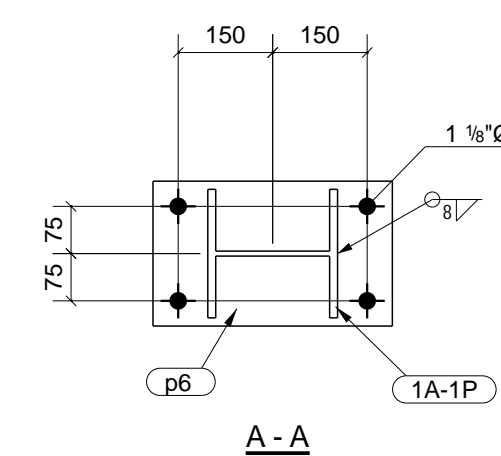


DIV	QTY	E-REF
1A	1	E-1A-1

ONE - COLUMN ASSEMBLY - 1A-1P

W	206x8
F	204x13



BILL OF MATERIAL						
Qty	Piece Mark	Description	Length	Weight Total	Remarks	Steel Grade
1	1A-1P	COLUMN ASSEMBLY				
1		W200X52	2526	131	SC-1/BEV-1	350W
2	bpl7002	PL10X199	2400	79		300W
2	bpl7003	PL6X40	203	1		300W
1	bpl7004	PL10X229	938	18		300W
1	bpl7005	PL10X199	1320	22		300W
92	m7001	5/8\"/>				
1	p3	PL10X140	165	2		300W
1	p6	PL25X230	380	17		300W
2	p8	FB8X95	201	2		300W
2	p31	FB8X95	205	2		300W
1	wf3	W200X52	6126	319		350W
2		3/4\"/>				

NOTE: HOLES 13/16\"/>

PAINT: PS1

BES STRUCTURAL
DETAILING LTD.
BesDetailing@shaw.ca, (807) 285-3950

PROJECT NAME
PARK CENTRE BUILDING

LOCATION
223 CASTLERIDGE BV, NE CALGARY, AB

CONTRACTOR
CANA CONSTRUCTION

ARCHITECT/ENGINEER
READ JONES CHRISTOFFERSEN LTD

06/16/2016	0	For Fabrication	AB
05/05/2016	A	For Approval	AB
DATE	NO.	DESCRIPTION	BY

LEDER STEEL
Create Opportunities.

Office 780.962.9040 #50, 53016 Hwy 60
Ellis Industrial Park
Acheson, AB T7X 5A7
Fax 780.962.9045
info@ledersteel.com

DESCRIPTION	DATE	JOB No.
FRAME	05/04/2016	2871
DRAWN BY	DRG No.	REV:
AB	1A-1P	0